

# SMART COMMAND

by **CAROMA**

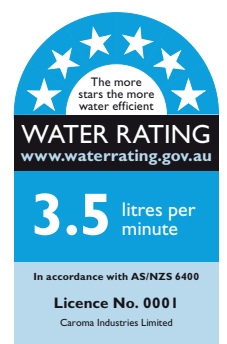
Revision: 0

Date: 30/10/2024

Supersedes all previous issues

## Wall Outlet Tapware

Electronic Hands-Free, Bluetooth® Enabled



## Wall Outlet Tapware



- Trim kit and In wall Rough in kit included
- Accurate and reliable time of flight sensors to detect hands & minimise accidental activation.
- Prominent reassurance LED displaying three separate colour modes (Cold/Warm/Hot).
- Advanced self configuring tap understands the surrounding surfaces and alters setting appropriately.
- Touch free activation for improved hygiene.
- Data capture from Tapware activations correlated with sanitaryware use provides insight into hygiene practices at any given time.
- BlueTooth enabled for direct access from a smart device and communication to Caroma Smart Command Cloud.
- Connected Smart tap enables quick configuration of operating parameters, testing of fixture status and usage review via Caroma Smart Command Cloud, Mobile App or through a BMS system.
- Hard wearing, low maintenance and solid lead free brass construction.

### Smart Command™ Wall Outlet Tapware

	Code No.
Chrome	98503C6AF-KIT
Matte Black	98503B6AF-KIT
Gunmetal	98503GM6AFSMO-KIT
Brushed Nickel	98503BN6AF-KIT
Brushed Brass	98503BB6AFSMO-KIT
Rough-In Kit	99694F

**Outlet:** Flowrate: 3.5 Litre per minute. WELS 6 Star.

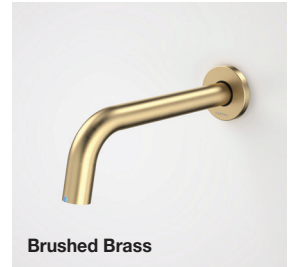
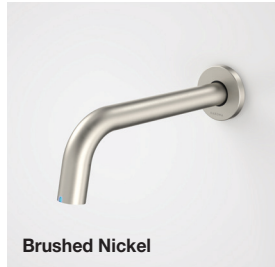
**Hygienic Flush:** Hygienic flush every 24 hours (optional).

**Electronic Valve:** The operating voltage of the valve is 6 volts DC.

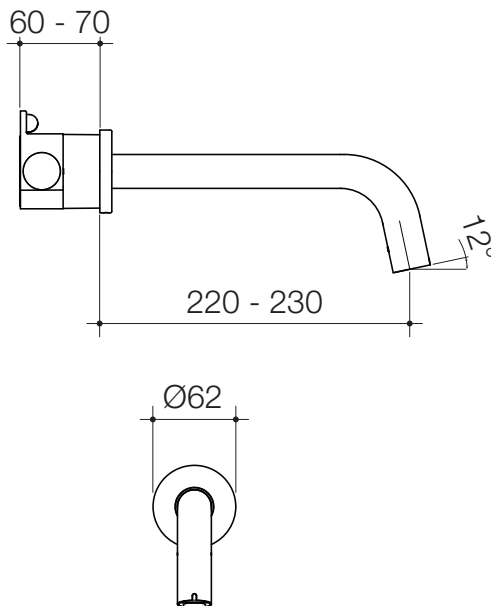
**Electronics:** Supply voltage to the system is 240V AC 50Hz. Operating current 6 volts DC.

**Installation:** Single Temperature, Male DN15 (G1/2") water connection.  
For general electrical connection install a plug socket 240V AC.

### Also available in the following colour options:



All dimensions are in millimetres and are subject to normal manufacturing variations.  
Caroma pursues a policy of continuing improvement in design and performance of its products.  
The right is therefore reserved to vary specifications without notice.



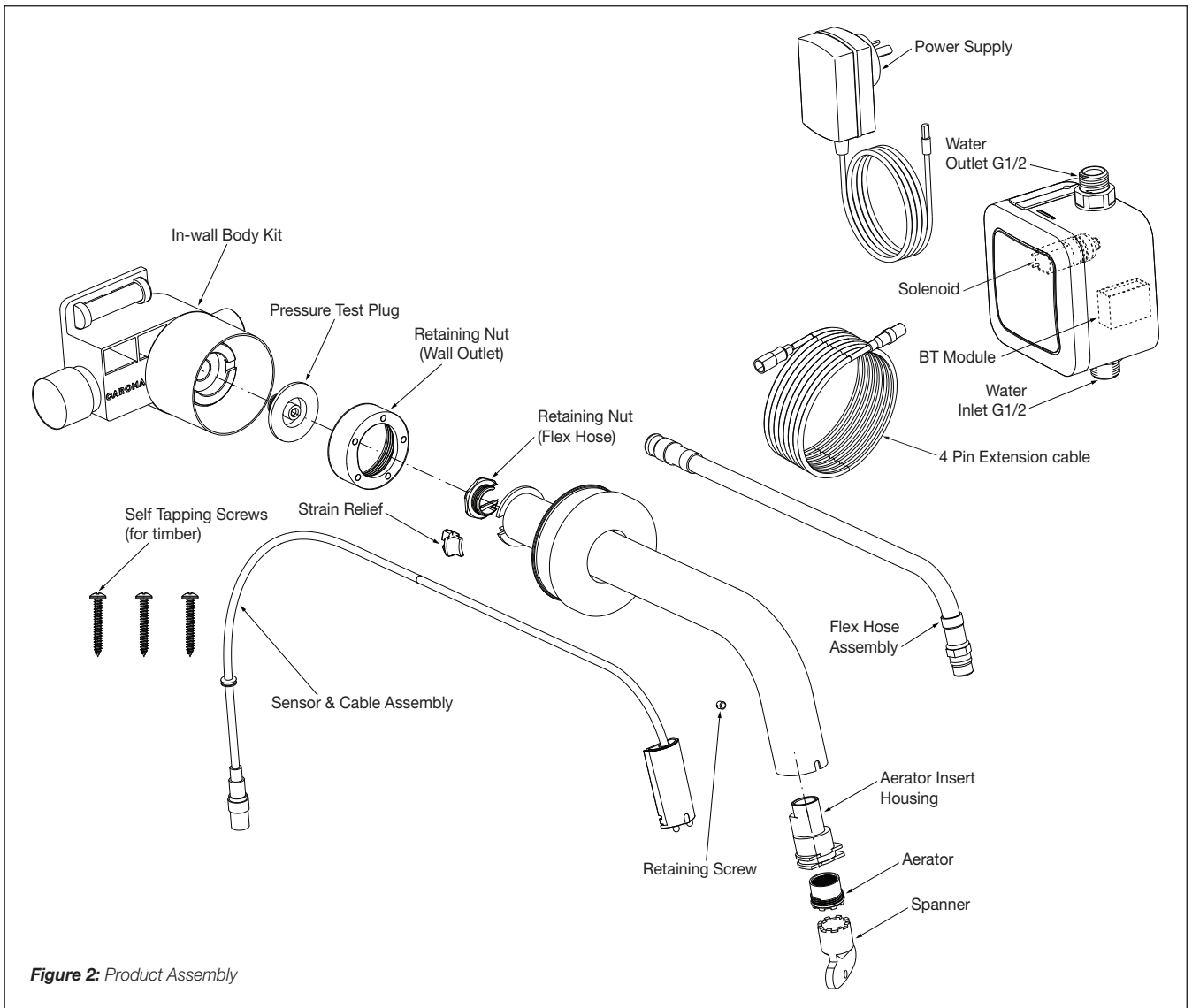


Figure 2: Product Assembly

SMART COMMAND by CAROMA	Technical Data Wall Outlet Tapware
<b>Ethernet Gateway Dimensions</b>	Width 211mm x Distance to Centre of Outlet: 236mm x Height: 50mm
<b>Flowrate</b>	3.5 Litre per minute. WELS 6 Star
<b>Power Supply</b>	TOF (Time of Flight)
<b>Maximum Power Consumption</b>	20mA
<b>Pressure Requirements</b>	Static inlet pressure range: 150 - 700kPa New regulation: -500kPa maximum static pressure
<b>BMS Connection Type</b>	BMS Connection via Caroma Smart Command connective hardware
<b>Communication Protocol</b>	Bluetooth 5.0
<b>Power Supply Input</b>	240V AC 50/60 Hz
<b>Power Supply Output</b>	6V DC
<b>Power Supply EMC Approvals</b>	CE, C-Tick and FCC
<b>Power Supply Safety Approvals</b>	RCM, UL, CUL, TUV, GS, SAA, CE and CB
<b>Power Supply Safety Compliance</b>	AS/NZS 60950, UL 60950, EN 60950, IEC 60950
<b>ROHS Compliance</b>	EN50581:2012
<b>EMC Compliance</b>	EN 301 489-1 V2.1.1, EN 300 328 V2.1.1, EN623111, EN62368-1: 2014, AS/NZS CISPR 32:2015 (ITE Class B)
<b>Electrical Safety Compliance</b>	IEC 60950-1, UL 60950-1, CSA C22.2 60950-1
<b>Complies with EC Directives</b>	RoHS2 Directive 2011/65/EU, Waste Electrical and Electronic Equipment (WEEE) Directive 2002/96/EC, Registration, Evaluation, Authorisation and Restriction of Chemicals (REACH) Directive, Conflict Minerals Directive
<b>IMPORTANT INFORMATION</b>	<p>Trim kit and In-wall Rough-in kit can be supplied separately.</p> <p>Not suitable for gravity feed systems.</p> <p>Wall outlet is fitted with a flow regulated aerator insert. This low flow rate may not be suitable for connection to some Instantaneous Gas Water Heaters, some Tempering Valves, some Solar Water Heaters &amp; some Thermostatic Mixing Valves.</p> <p>All pipework must be thoroughly flushed prior to installation, as foreign materials may block the solenoid or flow regulating device and reduce the flow of water.</p>